



airScope E3 Wireless Smart Speaker Setup Guide





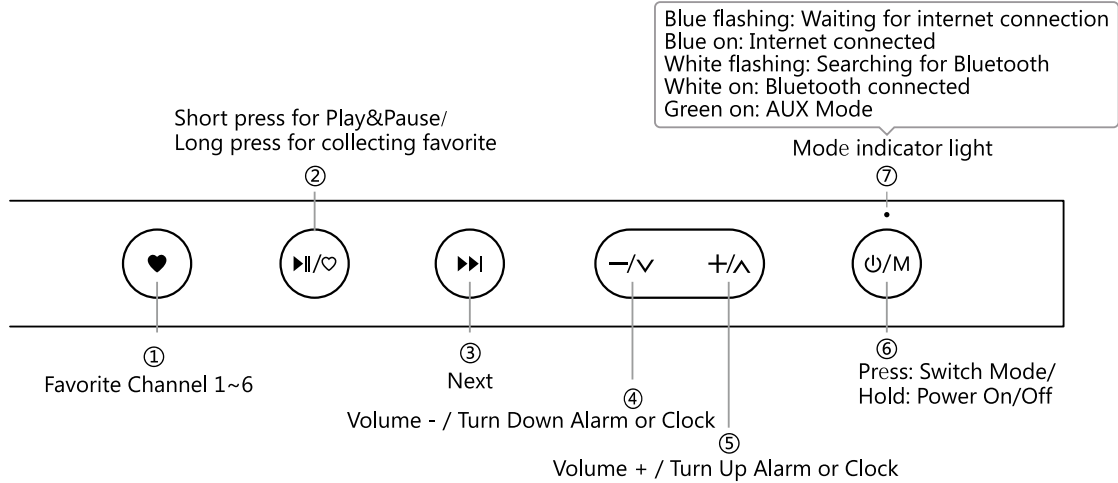
Product List

E3 Speaker X 1 pc
User Manual X 1 pc

AUX Cable X 1 pc
Warranty Card X 1 pc

Power Adapter X 1 pc

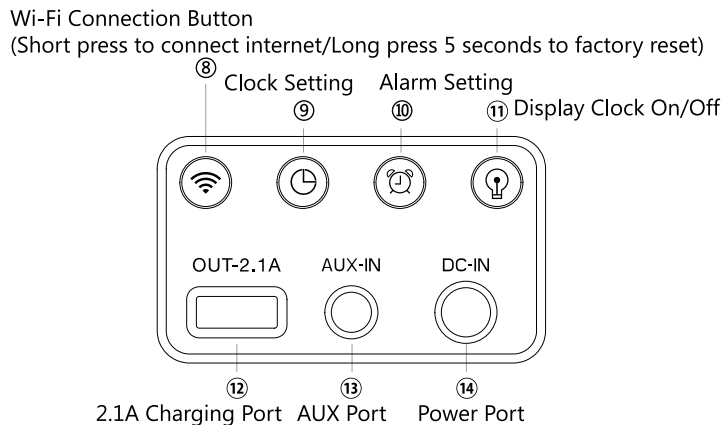
I Control panel



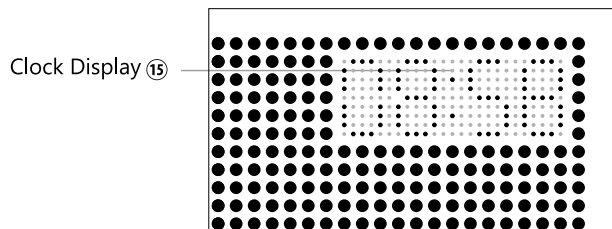
Note:

- (1) Press the button to choose from Channel 1 to 6
(2) Long press the to set up current Channel as a favorite channel

II Back Control panel



III Front panel



Wi-Fi Connection Mode

Step 1: Power on

Connect to the power adapter, power on the speaker, and a blue light will start flashing. This means the system is in Wi-Fi mode.

Step 2: APP downloading

Download and install Control APP, set the internet working according to the APP prompts.

Apple/Android devices can scan below QR code to install APP.

Step 3: Wi-Fi connecting

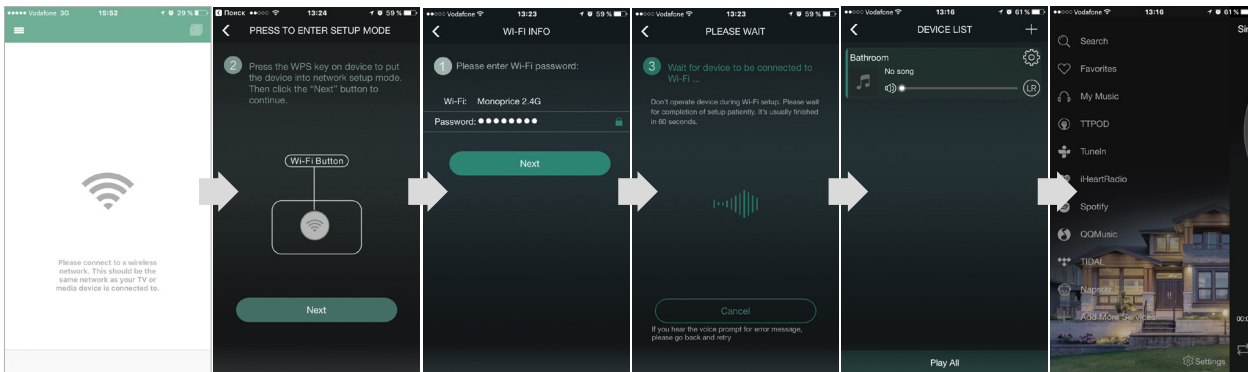
Open Control APP, connect to the wireless internet according to the prompts on the APP interface, the mode light will turn blue and the Wi-Fi is connected.



iOS



Android



Note:

1. After speaker connect to family router, it will become a router repeater (SSID:GGMM_E3_XXX,Password:gmm123456),recommend to change the password in APP setting.
2. If the router password was changed or the speaker has been removed to another internet environment, you have to reset the Wi-Fi connection.
3. Avoid using the speaker in a complicated public Wi-Fi network environment (e.g., office, airport and hotel), as this may lead to an unstable connection (play buffer, connection failure, etc.)

AirPlay Configuration:

To use AirPlay after speaker connecting network successfully, please swipe from the bottom of iPhone, open the shortcut and tap AirPlay, select your speaker and play music.

More functions:

Add multiple E3 speakers by Control APP to realize the multi-room play and Left & Right channel play.



Note:

1. The speaker can play channel 1 to 6 without cell phone control after connected to internet. It will play the last channel when re-connecting internet.
2. The music can be played not only by APP, but also by Airplay/DLNA

Other Connection Modes

1. Bluetooth connection

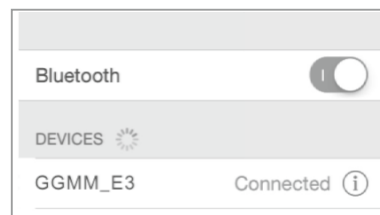
Press button and a white light indicator will start flashing. This will turn the E3 speaker into Bluetooth searching mode. Open the Bluetooth setting on your device and connect it with the speaker. Once it is successfully connected, the flashing light will become a solid white.

2. AUX connection

Press button and a green light indicator will appear. This will turn the E3 into AUX mode. Devices such as smartphones, tablets, PCs, and Macs can connect to the speaker via the provided AUX cable.

Note:

The speaker will enter standby mode after 30 minutes without music play in Bluetooth and AUX mode.



Clock/Alarm/display settings

1. Clock setting

The clock needs to be set manually by user. Press the button, once the hour starts flashing, press button to adjust the hour; then press the again, and the minute will start flashing. Press the button to adjust the minute. Once you're done, wait for 8 seconds to complete the clock settings.

Remark:

The speaker will enter standby mode after 30 minutes without music play in Bluetooth and AUX mode.

2. Alarm setting

Press the button to setup the alarm function. Press again, the hour should be flashing. Press button to adjust the hour; press again to move on to the minute. Press to adjust the minute. Once you're done, wait for 8 seconds to complete the alarm settings. To shut off the alarm already set, press and change the display to OFF. To end the alarm already going off, press any key on the panel.

3. Display Clock

24-hour system is applied by default for clock showing, press , four options of 24H,12H, OFF and ON are shown in turn and circularly. If you want to configure, select and wait for 8 secs, the configuration will be finished automatically.